

MONTHLY MEMBERSHIP PROGRESS REPORT

District 16 L

Results as of: 6/30/2024

GMT:

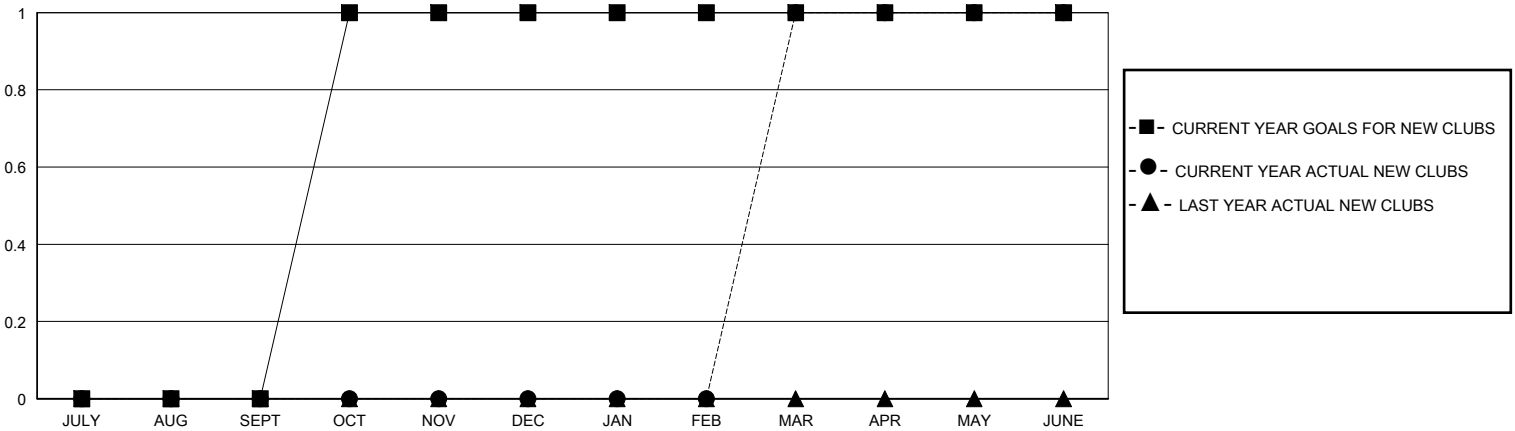
LOCATION NEW JERSEY

GMT CA

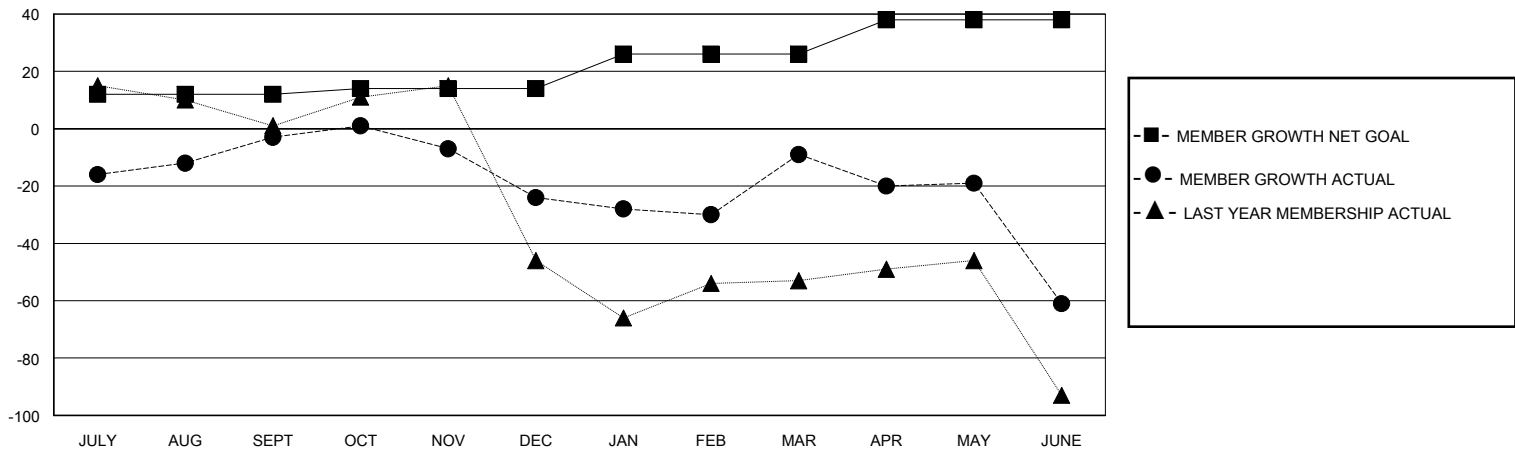
Clubs			
RESULTS FOR 2023-2024			
QUARTER	NEW CLUB GOAL	NEW CLUBS	DROPPED CLUBS
JULY/AUG/SEPT	0	0	0
OCT/NOV/DEC	1	0	1
JAN/FEB/MAR	0	1	0
APR/MAY/JUNE	0	0	0

Members			
RESULTS FOR 2023-2024			
QUARTER	MEMBER GROWTH NET GOAL	MEMBER GROWTH ACTUAL	DROPPED MEMBERS ACTUAL (including transfers)
JULY/AUG/SEPT	12	45	40
OCT/NOV/DEC	2	35	45
JAN/FEB/MAR	12	37	21
APR/MAY/JUNE	12	50	97

GOALS AND ACTUAL NEW CLUBS CUMULATIVE



GOALS AND ACTUAL MEMBERS CUMULATIVE



DROPPED CLUBS: 1	29 CLUBS OF 51 ADDED 1 OR MORE NEW MEMBERS	GENDER DISTRIBUTION MALE 806 (63.92%) FEMALE 452 (35.84%)
DROPPED MEMBERS DECEASED 18 CLUB CANCELLED 9 OTHER 176 TOTAL 203	CLICK HERE FOR CUMULATIVE MEMBERSHIP DATA	TOTAL FAMILY UNIT MEMBERS 222 FAMILY MEMBERS PAYING HALF DUES 119